

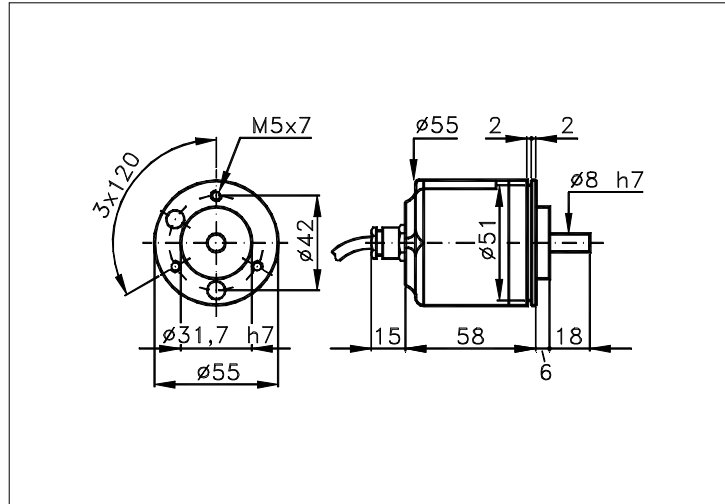
**INCREMENTAL ENCODER**

EXTREMELY COMPACT ENCODER AT VERY LOW O.E.M. PRICE. DIFFERENT FLANGES OPTIONAL.

Family: **I**  
 page: 09.E5 1/2  
 data sheet . II 066 E0A

**E5**

Sized draw standard version: CV Measures without tolerance according to UNI ISO 2768-mk

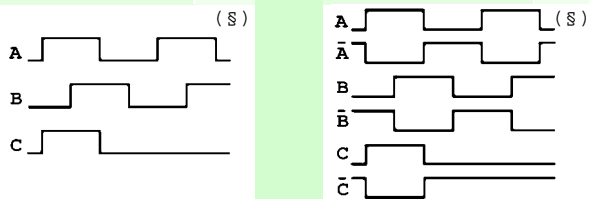


**TECHNICAL FEATURES AND POSSIBLE CONFIGURATIONS**

- Base.....: ANODIZED ALUMINIUM (\*)
- Cover.....: VALOX 420 (\*)
- Weight.....: 300 g
- Shaft.....: Ø 8 STAINLESS STEEL (\*)
- Max.rad/axial load.: 8 kg
- IP output side.(°): see 'CONNECTION' of page 2
- IP shaft side.(°)> |std. 64 | sealed 66 | low torq. -
- opt. type (page 2)> |standard | Z
- Contin. max RPM(\*\*)> |6000 | 3000 | -
- Starting torque gcm> |18 | 30 | -
- (°) IP according to CEI EN 60529, EN 60529, IEC 529
- (\*) custom options
- Ball bearings life....: 1,5 x 10<sup>9</sup> revolutions
- Impact resistance....: 50 G x 11ms
- Vibration resistance.: 12 G (10 ÷ 2000 Hz)
- Power supply.....: 5÷30V (see page 2)
- Operating temperature: 0 ÷ 70 °C (\*)
- Storage temperature..: -30 ÷ 85 °C
- N° of pulses/rev.....: 1 ÷ 1000
- Max frequency.....: 40 kHz (75 option)
- Max consumptions mA..: std 120 line driver 180 (\*)
- Light source.....: LED with >= 100000 h life
- (\*\*) intermittent max RPM + 30% of continuous max RPM

**ELECTRONICS**

CODE	DESCRIPTION	mA	CODE	DESCRIPTION	mA	CODE	DESCRIPTION	mA	CODE	DESCRIPTION	mA
	STANDARD NPN	10	N	DRIVER 26LS31	30						
K	NPN OPEN COLL	10	T	TTL 7404	10						
Q	NPN	70	C	DRIVER 88C30	20						
R	NPN OPEN COLL	70									
P	PNP	70									
U	PNP OPEN COLL	70									
B	PUSH-PULL PRO	70									
H	PUSH-PULL	70									



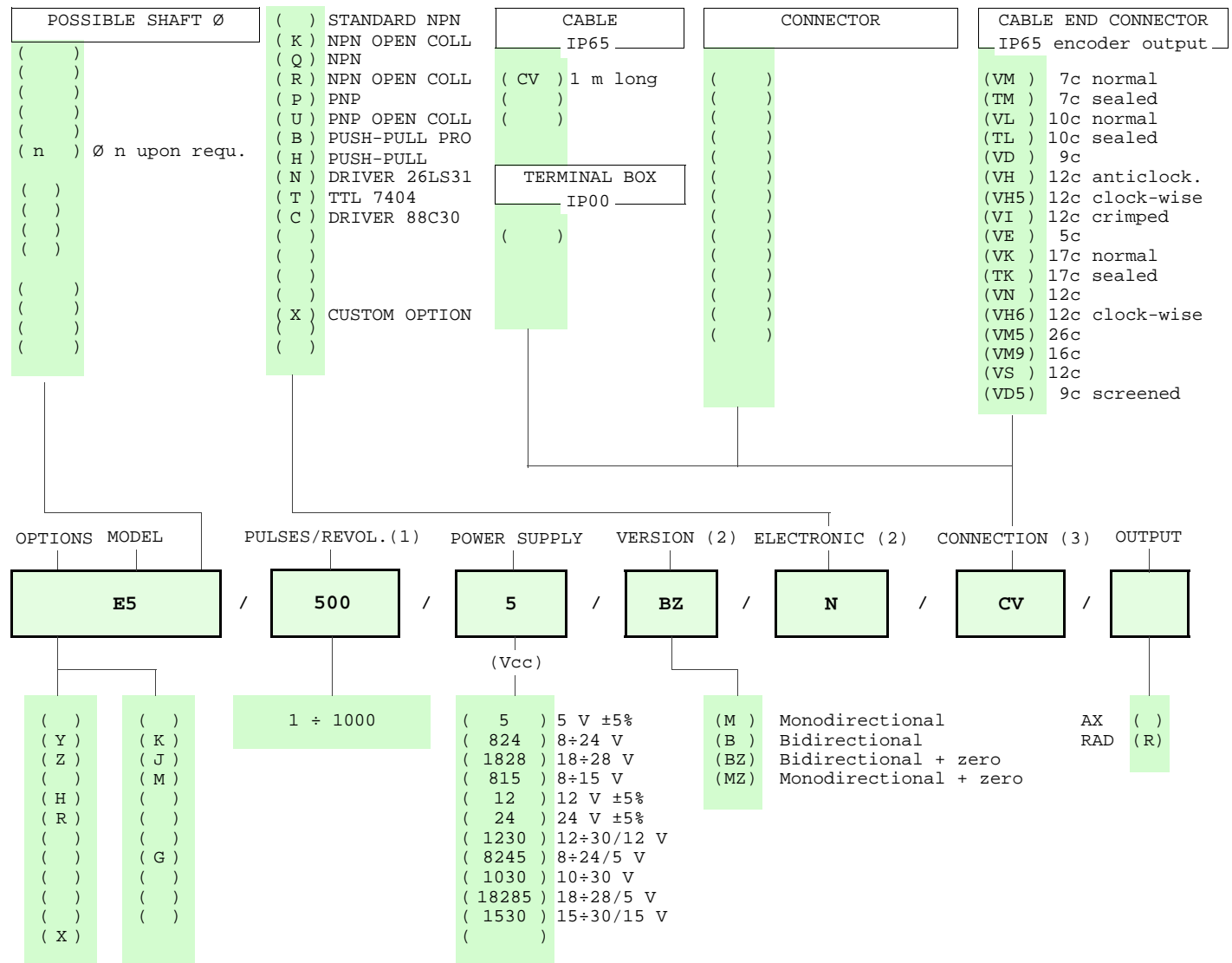
Tolerance between phases ± 35° , symmetry ± 15°

(§) Clock-wise output rotation (see shaft).

\*  
\*  
\*

POSSIBLE OPTIONS				POSSIBLE CONNECTIONS								
CODE	DESCRIPTION	CODE	DESCRIPTION				OUTPUT:					
Y	Unbreakable disk	K	Invert. phase A,B,Zero.	CABLE			AX					
Z	Sealed ball bearing	J	Zero logic combination	CV			RAD					
H	Different shaft Ø	M	Impregnated electronic	CONNECTOR			OUTPUT:					
R	75 KHz frequency											
		G	Tropicalization	CABLE END CONNECTOR			OUTPUT:					
				VM	TM	VL	TL	VD	VH	VH5	VI	AX
X	Custom options			VE	VK	TK	VN	VH6	VM5	VM9	VS	RAD
				VD5								
				TERMINAL BOX			OUTPUT:					

**ORDERING INFORMATION**



NOTE: FOR 88C30 MAX 15 Vdc

Product manufactured according to UNI EN ISO 9001:2000, supplied with CHECKING and CONFORMITY declaration with CE mark and with TWO (2) YEARS WARRANTY starting from delivery date.

- (1) For further information see PULSES/REVOL. data sheet
- (2) For further information see ELECTRONIC data sheet
- (3) For further information see CONNECTION data sheet

